

The Boat-House-Boat

Designed upside down in Tasmania- by Philip Myer

A Houseboat moored in the wonderful coastal coves, rivers and sheltered lakes of Maine is not just about a house that is a boat, it is about boats- boats that visit and stay with the houseboat. Living on a houseboat from spring through to early autumn means the houseboat has to be comfortable but it also should be a place where you can keep your 12 ½ footer tied up alongside, easy to dock and shelter your dinghy and a place for the frequent summer visitors to tie up.

You might also have another dinghy that needs a bit of painting when things are quiet, so having a place for it out of the water would be very handy. I based my thinking around the needs of small boats being able to stay at and visit the houseboat. In essence it is about designing a floating base so your family and friends can enjoy the pleasures of small boats. My design is a boathouse attached to a houseboat together making a 'Boat-House-Boat'.

The boathouse has two finger docks 3'6" wide that extend out 14' from the back of the Houseboat . The water between the docks and the docks themselves are covered by a gable roof, which extends in the same pitch as the houseboat roof. So when the weather is a bit windy or raining, you can tie up and unload in comfort. At the head of the dock is the enclosed composting toilet and shower with a cupboard for boat stuff. There are davits under the roof so a second dinghy or canoes can be stored or the main dinghy lifted out of the water. There are roll down clear blinds on the outside edges of the docks to give more shelter when needed. The Boat-House-Boat can be powered by two electric or petrol outboard motors on the dock ends or pushed by a yawl boat in the dock.

The main body of the Houseboat is 22' long x 15' wide. It consist of one main room 16' long with a 6' covered porch at the front. At the rear there are glass doors leading to each dock so you can watch the coming and going on the water. At the front there is a pair of glass bi fold doors leading out onto the covered porch. The porch has planting boxes, they are irrigated by the grey water from the shower and sink. There are roll down clear blinds to give more protection when needed. Sitting above the porch and part of the main room is the sleeping loft, accessed by a

ships ladder. There is room for a double or two single sized beds. Doors open at the front and rear for a cooling breeze on a warm day. The main room has a pitched ceiling with opening skylights. A wood stove with oven, the firewood is stored in bins under the docks.

A simple bench layout on the starboard side with ample storage and a 24 volt fridge. A two burner LPG stove for when it's too warm to use the wood stove. There is room for a two seat couch that converts to another double bed, a round table that seats four and room for book shelves.

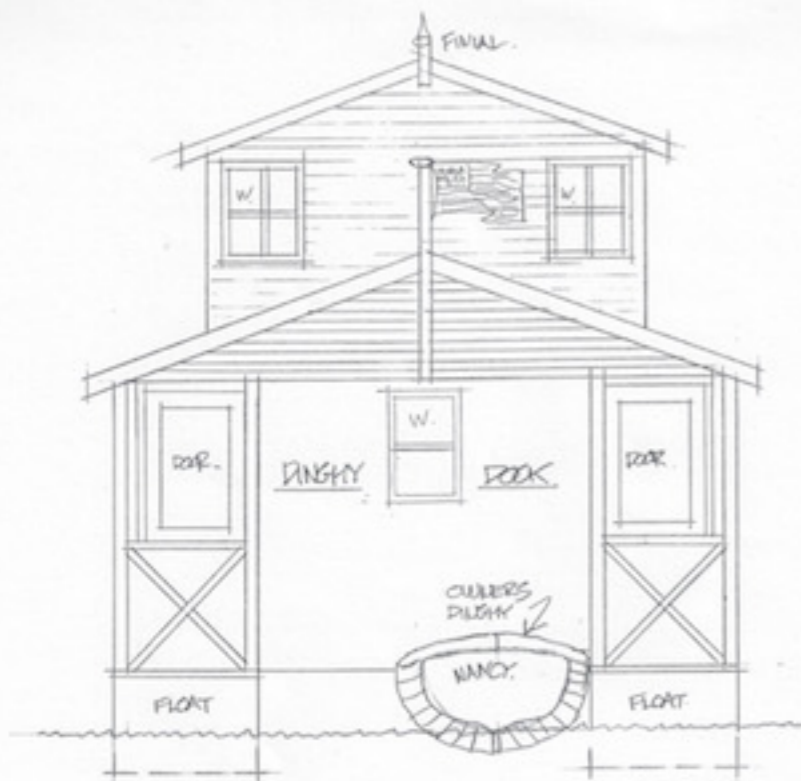
A few modern comforts - The Boat-House-Boat is self contained other than a LPG bottle for the cook top. It would have batteries wired for 24 volt power for lighting, water pumps and the fridge. The batteries are charged by solar panels on the roof along with a solar water heater with an insulated storage tank below the floor. A wind generator can also be fitted on the boathouse roof. Rainwater is collected off the roof and stored in tanks below the floor. Grey water from the shower and sinks is also stored in a sub floor tank.

Construction- This a substantial structure that could be prefabricated on two 36' long pontoon halves to facilitate easier transport. They would be bolted together at the launching site. The pontoons are constructed of epoxy glassed marine plywood. The house structure would be 3" studwork with internal plywood lining. The exterior cladding could be grooved face plywood or traditional siding. All the structure would be well insulated in the walls and the roof with double glazed windows, skylights and doors. The roofing would be galvanised corrugated iron to give the structure an 'Aussie' shed look.

This design would not be inexpensive to build, but it would be a real alternative to owning an expensive coastal summer house. It would be a comfortable home for a couple for 6/7 months of the year, or it could be shared by 2 or 3 families as a summer retreat.

Living on the Boat-House-Boat is about being on the water with family and friends, slowing down away from the stresses of modern living. It is also about messing around in small boats and yachts and what could be more pleasurable than that.

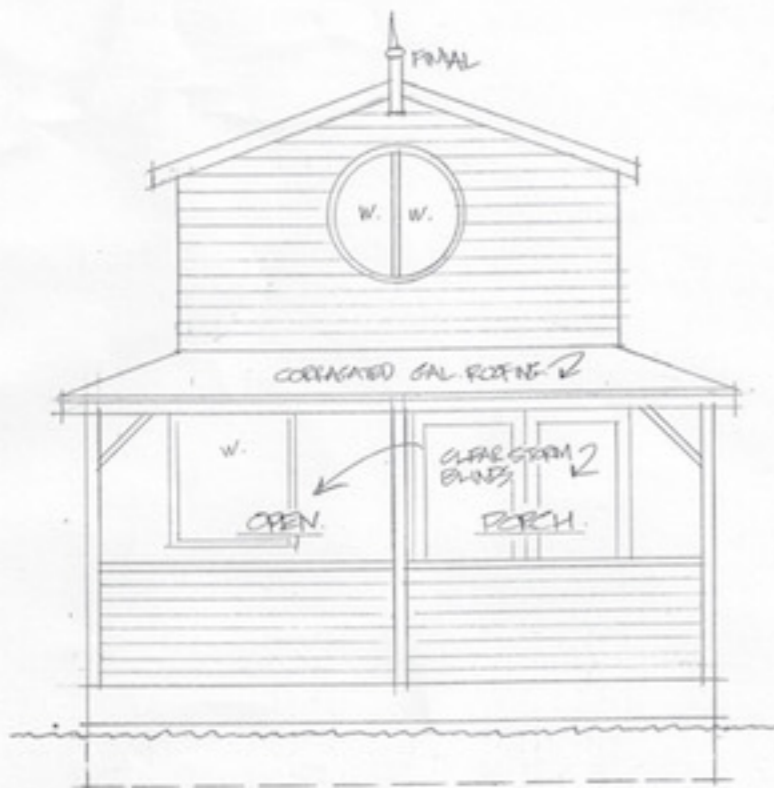
Philip Myer.



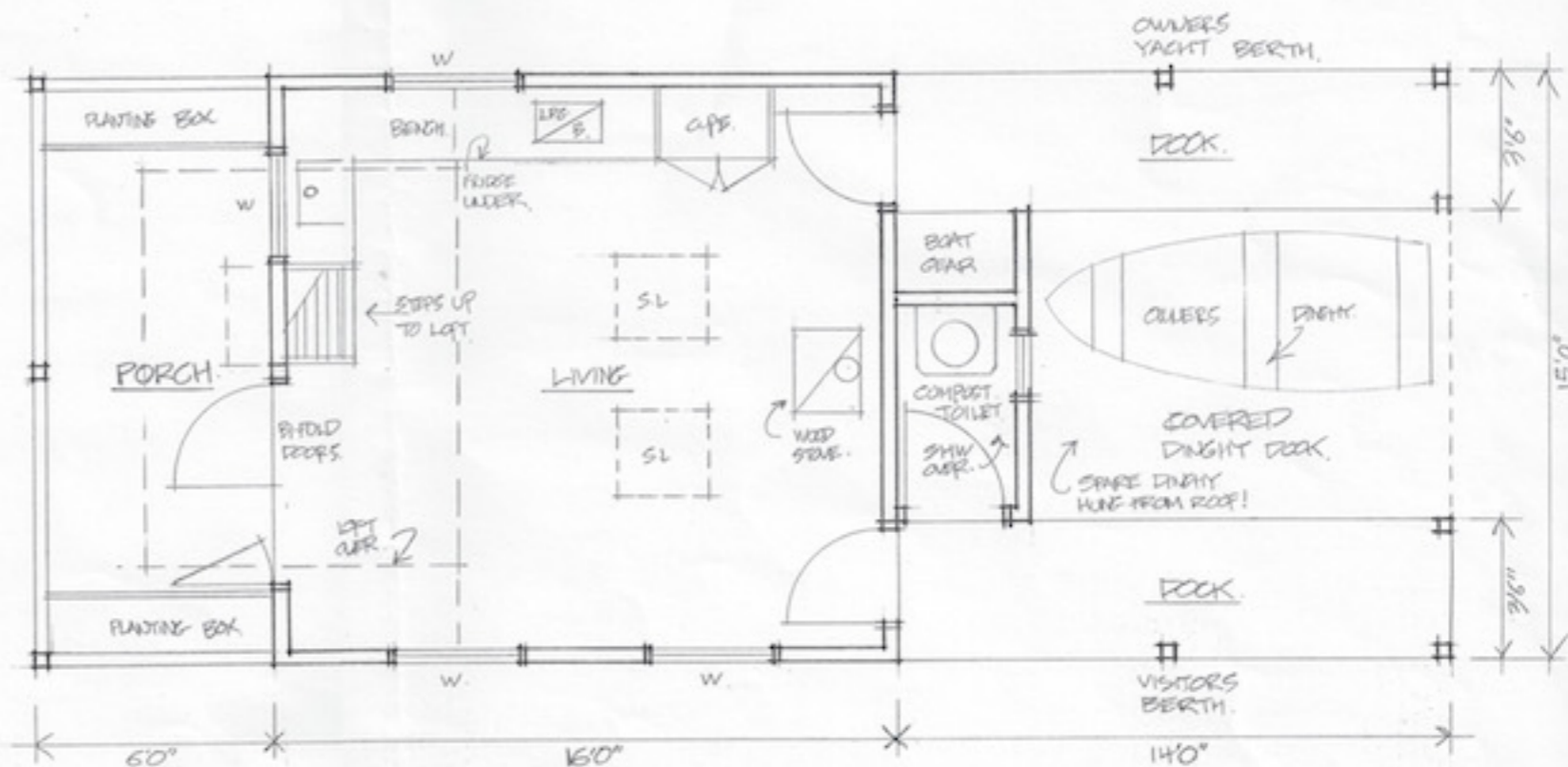
REAR (STERN) ELEVATION.



SIDE ELEVATION.



FRONT (BOW) ELEVATION.



DECK PLAN.

'BOAT-HOUSE-BOAT.'

DESIGNED UPRIDE DOWN IN TASMANIA.
BY PHILIP MYER. DEC. 2015 1/4" = 10"

Philip Myer